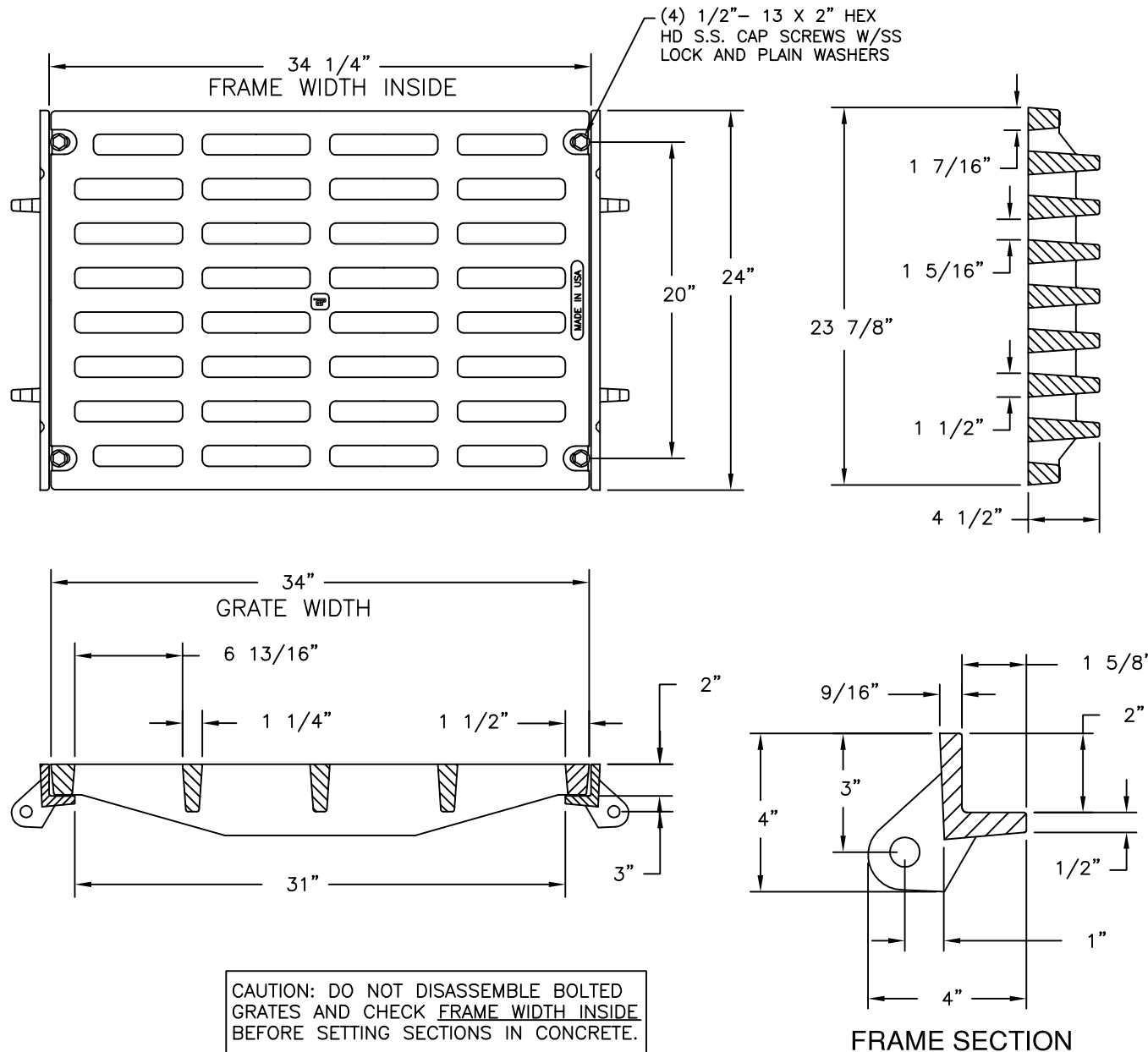


# 6910M2 V7320-2 Assembly

Supplied By:

**TRENCHDRAIN**  
SUPPLY

877-903-7246  
www.trenchdrainsupply.com



## Product Number

00691008

## Design Features

- Materials
  - Trench Grate
    - Ductile Iron (70-50-05)
  - Trench Rail
    - Gray Iron (CL35B)
- Design Load
  - Airport Extra Heavy Duty
- Open Area
  - 276 sq in
- Coating
  - Undipped
- ✓ Designates Machined Surface

## Certification

- 
- ASTM A536
- ASTM A48
- Country of Origin: USA

## Major Components

00691048  
47320215

## Drawing Revision

1/9/2006 Designer: SMH  
10/08/2014 Revised By: DAE

## Disclaimer

Weights (lbs./kg) dimensions (inches/mm) and drawings provided for your guidance. We reserve the right to modify specifications without prior notice.

CONFIDENTIAL: This drawing is the property of EJ GROUP, Inc., and embodies confidential information, registered marks, patents, trade secret information, and/or know how that is the property of EJ GROUP, Inc. Copyright © 2012 EJ GROUP, Inc. All rights reserved.

## Contact

800 626 4653  
ejco.com